



Arizona State University

100 University Way, Lake Havasu City, AZ 86403 | (928) 854-9705 | Fax: (928) 854-9709 | <http://havasu.asu.edu>

What's new at ASU at Lake Havasu?

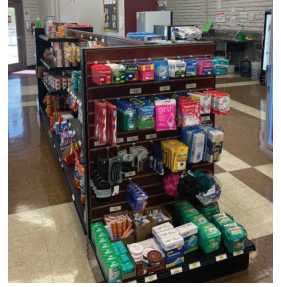
ASU at Lake Havasu is always in the process of improvement since more and more students are coming every year, and this time is not an exception. ASU at Lake Havasu broadened the assortment of food at the Sun Devil Market by adding a new section for vegetarians, they established a new reservation system to use the kitchen, and they launched the ASU Local program on campus.



In addition to regular menu items, Sun Devil Market staff are excited to introduce more vegan and vegetarian options to ensure that everyone's taste buds are satisfied. They are bringing a variety of dishes to the market in collaboration with Paleo to Go, which is known for its healthy meals. The Paleo diet emphasizes whole foods such as vegetables, fruits, nuts, and meat while avoiding gluten and processed sugars.

The popular residence hall has also

seen some changes. This semester the university has taken the initiative to provide a microwave and a mini fridge in all dorm rooms, for which the students have to



pay 50 dollars per item. Having a shared space with a kitchen has always been one of the advantages of this campus; however, due to some minor issues in the past, ASU at Lake Havasu decided to set up a reservation system to use the common room to maintain discipline and organization. Students around the campus also love to spend time in the renovated fitness center and the Daytona gym, which provide the perfect place to play different games like basketball and volleyball.

Last but not least, ASU at Lake Havasu is excited to announce that now they now house the ASU Local program, which offers a great opportunity for students to personalize their career plan and earn a degree from a convenient location. ASU Local offers 140+ undergraduate programs, available through ASU Online, designed to connect you to jobs and community needs.

